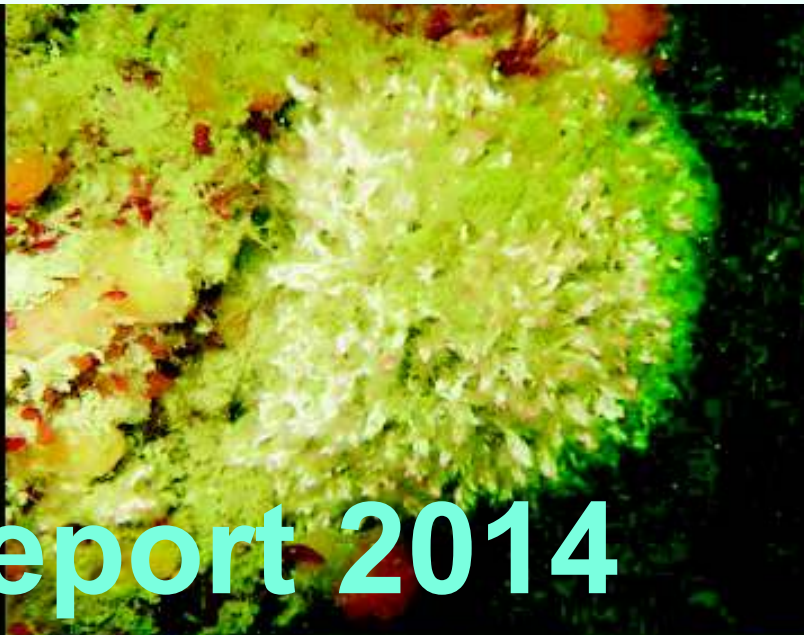
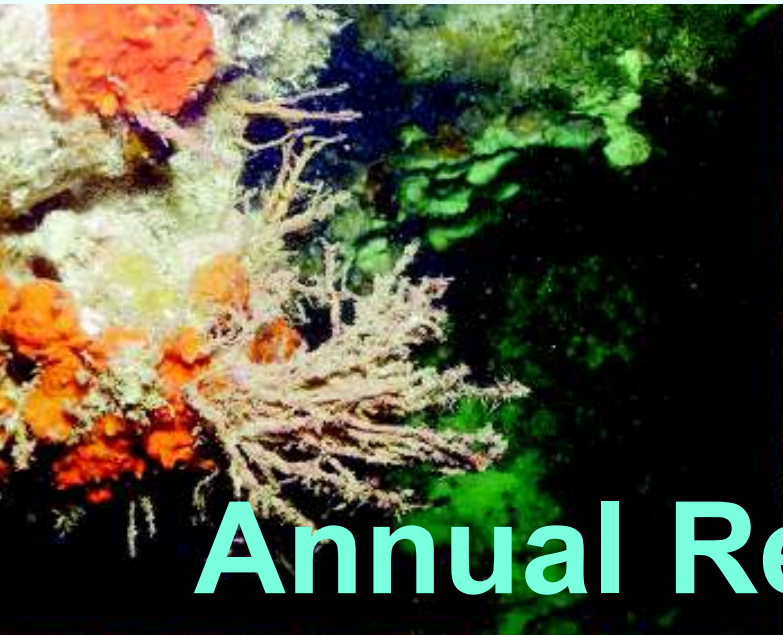


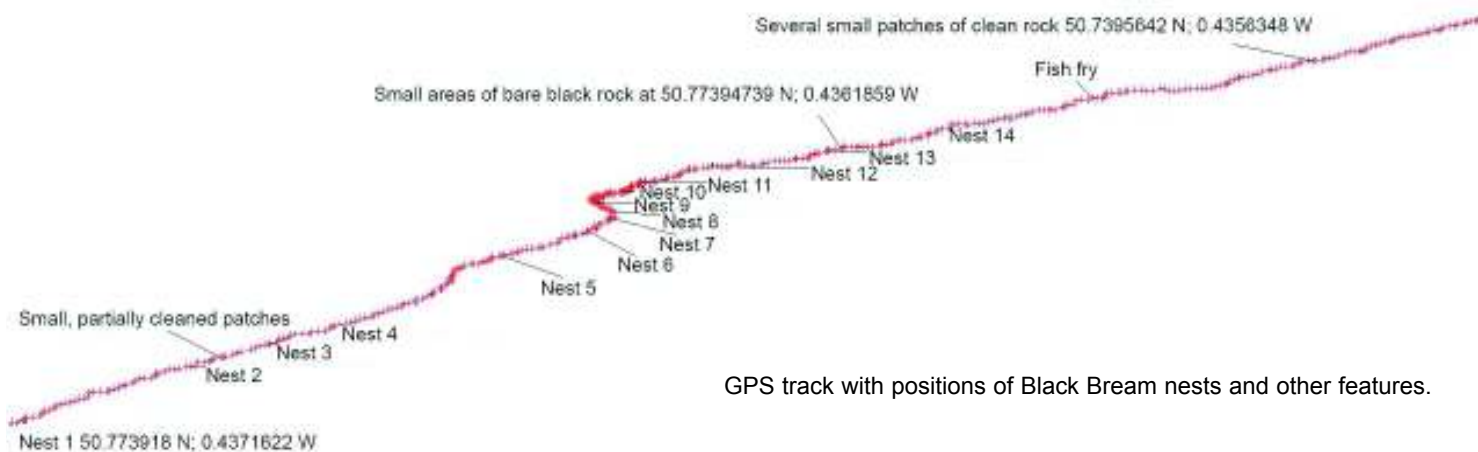
Sussex Seasearch

Annual Report 2014



Kingmere rMCZ: Rich reef life.

Despite the lack of diving opportunities 2014 was an important milestone for Sussex in the protection of Sussex marine sites. Two dive trips were carried out on the Kingmere rMCZ, one in April and the second in June. Conditions in April were far from ideal and resulted in a limited amount of data gathering. The one in June was far more successful and resulted in finding many Black Bream nests (not occupied). Our thanks to Bryony Chapman for

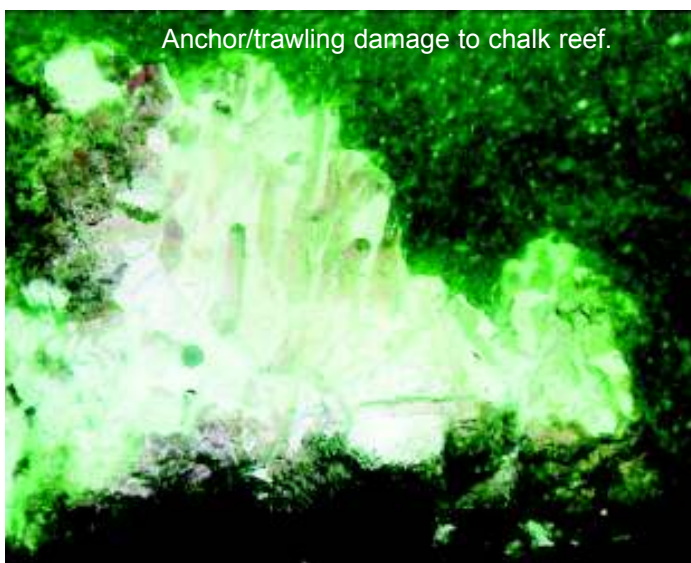


GPS track with positions of Black Bream nests and other features.

using her continually sampling GPS mounted on an SMB which provided approximate positions of the nests given in the image above (not all Nest GPS positions are shown although they were recorded).

Additional evidence was submitted to Natural England/Joint Nature Conservation Committee to support the Marine Conservation Zones: Beachy Head West and Kingmere. Two reports were submitted: *Summary Sussex Kingmere rMCZ Report 2014*, *Summary Sussex Beachy Head West rMCZ Report 2014* and a separate *Photographic Evidence* file.

We now also need to focus on those MCZ submissions that were not accepted but are pending, notably *Beachy Head East* which includes the *Royal Sovereign Shoals*, an extremely rich and diverse area. More data need to be gathered but problems arise with accessibility and the large area and diverse biotopes that need to be visited.



One interesting thing to note was damage to the chalk reef caused either by either anchors or trawling. The soft chalk face of the reefs are easily damaged since they are soft and already weakened by the biogenic erosion of piddocks.

Sussex Seasearch dives undertaken in 2014 were:

- The Waldrons
- Wrecks: *Indiana*
Oceana
- Selsey Lifeboat Station Two Selsey East beaches (the beaches E of the Lifeboat Station vary in topography and marine life reflecting the exposure or otherwise of the clay, gullies and sediment distribution)
- Worthing Lumps
- SW Rocks
- Brighton Pier

Courses and Talks

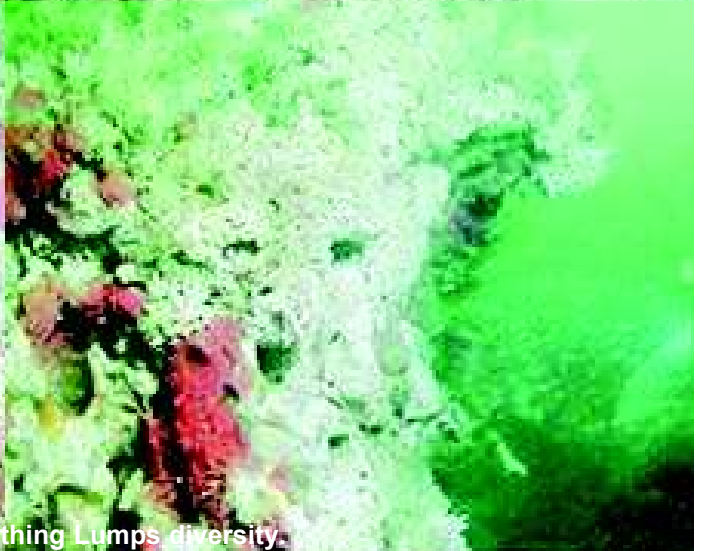
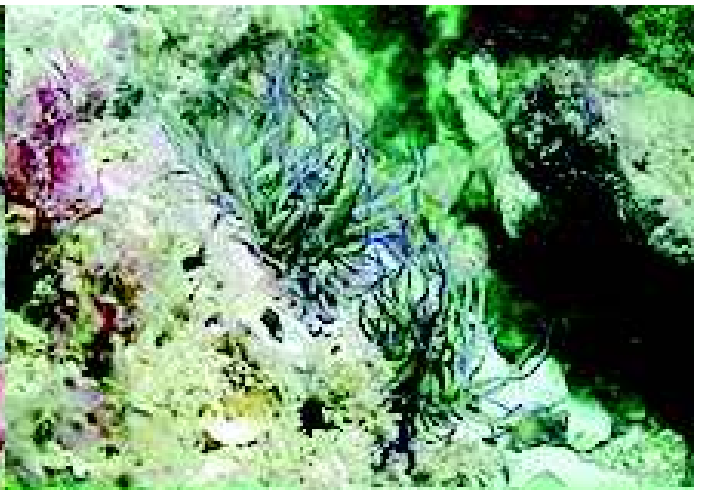
Olle organised an Observer Course on the 22nd February and gave talks to Worthing BSAC, Marina Divers, Sussex Diving, Sealife Centre and Brighton Explorers Club.

Selsey Lifeboat Station Development

In the next five years the RNLI are up-grading the lifeboat to a 'Shannon' class vessel powered by twin water jets. It has been mooted that the existing lifeboat station will be removed in order to facilitate the launching of this craft.

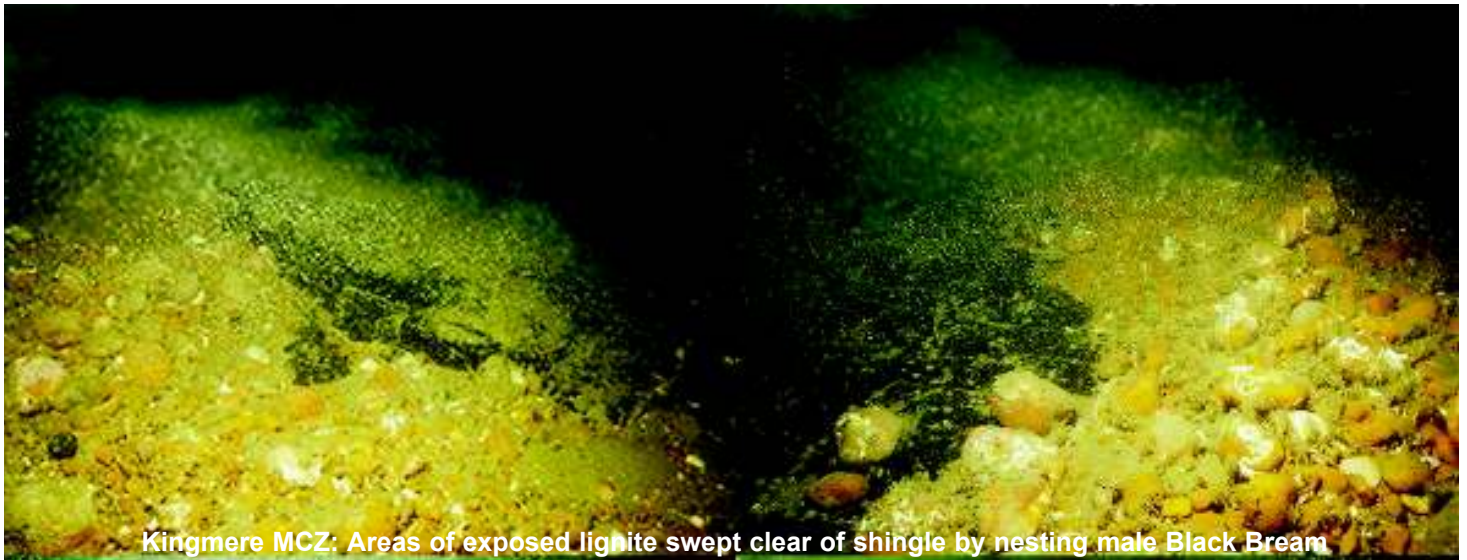
Details about the boat can be found at <http://www.selseylifeboats.co.uk/News/NewSelseyLifeboat.html> This will obviously impact on divers and the loss or at the very least result in major modification of the biotopes currently present. The site is also used for Seasearch training dives.





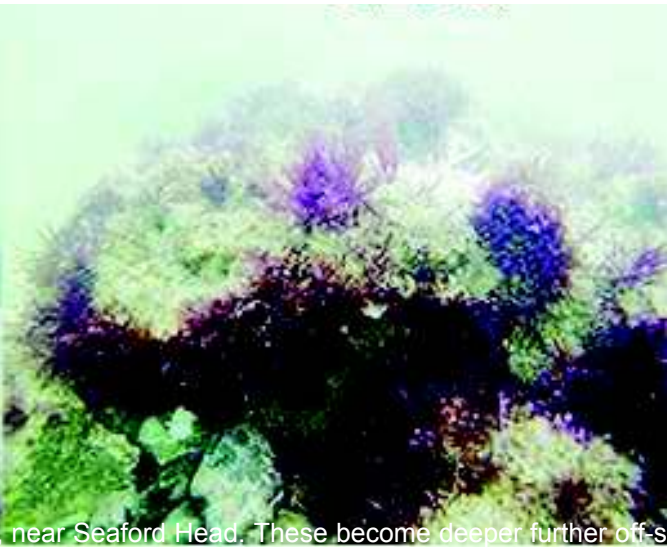
Kinghmere MCZ: Worthing Lumps diversity
© Chris Williams (images taken from video)





Kingmere MCZ: Areas of exposed lignite swept clear of shingle by nesting male Black Bream

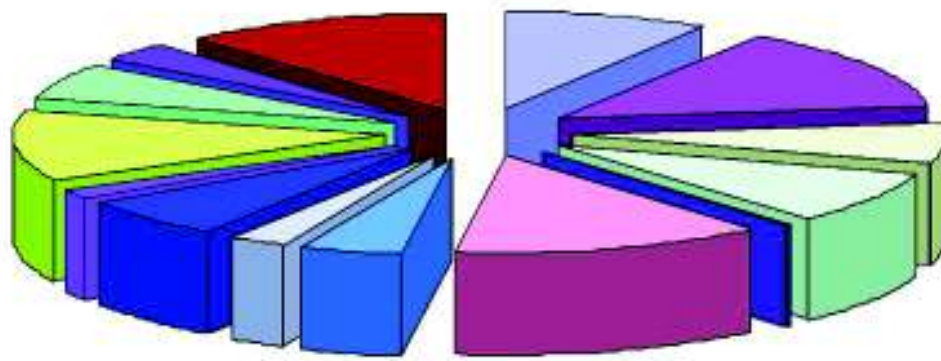
© Gerald Legg



Beachy Head West MCZ: Gullies off Splash Point, near Seaford Head. These become deeper further off-s

©Gerald Legg (images taken from video)





- Sponges
- Sea Anemones/Seafirs
- Polychaete Worms
- Molluscs
- Horseshoe Worms
- Crustacea
- Seamats
- Starfish
- Tunicates
- Cartilaginous Fish
- Bony Fish
- Brown Algae
- Green Algae
- Red Algae

<p>SPONGES Porifera indet crusts <i>Pachymatisma johnstonia</i> <i>Dysidea fragilis</i> <i>Cliona celata</i> <i>Polymastia penicillus</i> <i>Suberites carnosus</i> <i>Suberites ficus</i> <i>Halichondria bowerbanki</i> <i>Hymeniacion perlevis</i> <i>Amphilectus fucorum</i> <i>Phorbas plumosus</i> <i>Clathria spinarcus</i> <i>Mycale</i> SEA ANEMONES/SEAFIRS <i>Actinia equina</i> <i>Actinia fragacea</i> <i>Anemonia viridis</i> <i>Urticina felina</i> <i>Metridium senile</i> <i>Actinothoe sphyrodeta</i> <i>Cereus pedunculatus</i> <i>Sagartia elegans</i> <i>Sagartia troglodytes</i> <i>Alcyonium digitatum</i> Hydrozoa <i>Tubularia indivisa</i> <i>Aglaophenia pluma</i> <i>Obelia geniculata</i> <i>Halecium</i> <i>Nemertesia antennina</i> <i>Plumularia setacea</i> <i>Hydrallmania falcata</i> <i>Sertularia argentea</i> POLYCHAETE WORMS <i>Arenicola marina</i> <i>Sabellaria spinulosa</i> <i>Bispira volutacornis</i> <i>Sabella pavanina</i> <i>Filograna implexa</i> <i>Spirobranchus triqueter</i> <i>Spirorbis</i> <i>Polydora ciliata</i> <i>Lanice conchilega</i></p>	<p>MOLLUSCS <i>Hiatella arctica</i> <i>Ensis</i> <i>Pholas dactylus</i> <i>Mytilus edulis</i> <i>Pecten maximus</i> <i>Ciliatocardium ciliatum ciliatum</i> <i>Lutraria lutraria</i> <i>Sepia officinalis</i> <i>Calliostoma zizyphinum</i> <i>Crepidula fornicata</i> <i>Trivia arctica</i> <i>Buccinum undatum</i> <i>Nuccella lapillus</i> <i>Nassarius reticulatus</i> <i>Doris pseudoargus</i> HORSESHOE WORMS <i>Phoronis hippocrepia</i> CRUSTACEA Amphipoda <i>Jassa</i> <i>Cancer pagurus</i> <i>Galathea squamifera</i> <i>Inachus dorsettensis</i> <i>Inachus phalangium</i> <i>Macropodia tenuirostris</i> <i>Maja squinado</i> <i>Homarus gammarus</i> <i>Hyas</i> <i>Pagurus bernhardus</i> <i>Palaemon serratus</i> <i>Palaemon serratus</i> <i>Palaemon serratus</i> <i>Palaemon serratus</i> <i>Liocarcinus holsatus</i> <i>Necora puber</i> <i>Carcinus maenas</i> <i>Semibalanus balanoides</i> <i>Balanus balanus</i> <i>Perforatus perforatus</i> SEA MATS Bryozoa indet crusts <i>Bugula neritina</i> <i>Bugula plumosa</i></p>	<p><i>Bugula turbinata</i> <i>Cellepora pumicosa</i> <i>Cryptosula pallasiana</i> <i>Chartella papyracea</i> <i>Flustra foliacea</i> <i>Membranipora membranacea</i> <i>Crisia eburnea</i> STARFISH <i>Asterias rubens</i> TUNICATES <i>Clavelina lepadiformis</i> <i>Didemnum coriaceum</i> <i>Diplosoma listerianum</i> <i>Aplidium punctum</i> <i>Ascidia mentula</i> <i>Asciidiella aspersa</i> <i>Ciona intestinalis</i> <i>Corella parallelogramma</i> <i>Molgula manhattensis</i> <i>Botrylloides leachii</i> <i>Botryllus schlosseri</i> <i>Dendrodia grossularia</i> <i>Styela clava</i> CARTILAGINOUS FISH <i>Scyliorhinus canicula</i> <i>Raja clavata</i> <i>Raja undulata</i> BONY FISH <i>Conger conger</i> <i>Pollachius pollachius</i> <i>Trisopterus luscus</i> <i>Lipophrys pholis</i> <i>Parablennius gattorugine</i> <i>Callionymus lyra</i> <i>Gobiusculus flavescens</i> <i>Pomatoschistus microps</i> <i>Pomatoschistus minutus</i> <i>Pomatoschistus pictus</i> <i>Ctenolabrus rupestris</i> <i>Labrus bergylta</i> <i>Labrus bergylta</i> <i>Symphodus melops</i> <i>Dicentrarchus labrax</i> <i>Pholis gunnellus</i></p>	<p><i>Pleuronectes platessa</i> <i>Solea solea</i> <i>Taurulus bubalis</i> <i>Hippocampus hippocampus</i> <i>Syngnathus acus</i> BROWN ALGAE <i>Arthrocladia villosa</i> <i>Desmarestia aculeata</i> <i>Dictyota dichotoma</i> <i>Taonia atomaria</i> <i>Pylaiella</i> <i>Striaria</i> <i>Spongonema tomentosum</i> <i>Fucus serratus</i> <i>Fucus vesiculosus</i> <i>Halidrys siliquosa</i> <i>Chorda filum</i> <i>Laminaria digitata</i> <i>Cladostephus spongiosus</i> <i>Sphacelaria</i> GREEN ALGAE Encrusting green algae <i>Bryopsis</i> <i>Cladophora pellucida</i> <i>Ulva intestinalis</i> <i>Ulva lactuca</i> <i>Ulva linza</i> RED ALGAE Rhodophyta <i>Rhodophycota indet. (non-calc. crusts)</i> <i>Aglaothamnion</i> <i>Ceramium</i> <i>Heterosiphonia plumosa</i> <i>Nitophyllum punctatum</i> <i>Chondria dasyphylla</i> <i>Polysiphonia</i> <i>Polysiphonia nigra</i> <i>Polysiphonia stricta</i> <i>Griffithsia corallinoides</i> <i>Halurus equisetifolius</i></p>	<p><i>Corallina officinalis</i> <i>Phymatolithon purpureum</i> <i>Calliblepharis ciliata</i> <i>Dilsea carnosa</i> <i>Furcellaria</i> <i>Chondrus crispus</i> <i>Polyides rotunda</i> <i>Gracilaria bursa-pastoris</i> <i>Gracilaria gracilis</i> <i>Grateloupia dichotoma</i> <i>Palmaria palmata</i> <i>Rhodothamniella floridula</i> <i>Plocamium cartilagineum</i> <i>Chylocladia verticillata</i> <i>Rhodymenia holmesii</i></p>
---	---	---	---	---



Keep up the good work - enjoy your diving!

Thank You
 Our thanks to those who took part in 2014: Anna Read, Anna Read, Barbara King, Bryony chapman, Chris Read, Chris Williams, Ellie Taylor, Glen King, Graham Jackson, Michael Hood, Michelle Tebbs, Neil Watson, Nigel McRobb, Olle Åkesson, Sarah Bignell, Sue Thomas. And to skippers Paul Jackman (*Defiance Charters*) and Paul Dyer of *Brighton Diver*.